



South Woodham Ferrers  
Health & Social Care Group



# The Impact of Covid on Dying, Death & Bereavement

A 37-minute film

Communications Pack

In partnership with:



Funded by  
UK Government



Mid and South Essex  
Integrated Care  
System



Chelmsford  
City Council

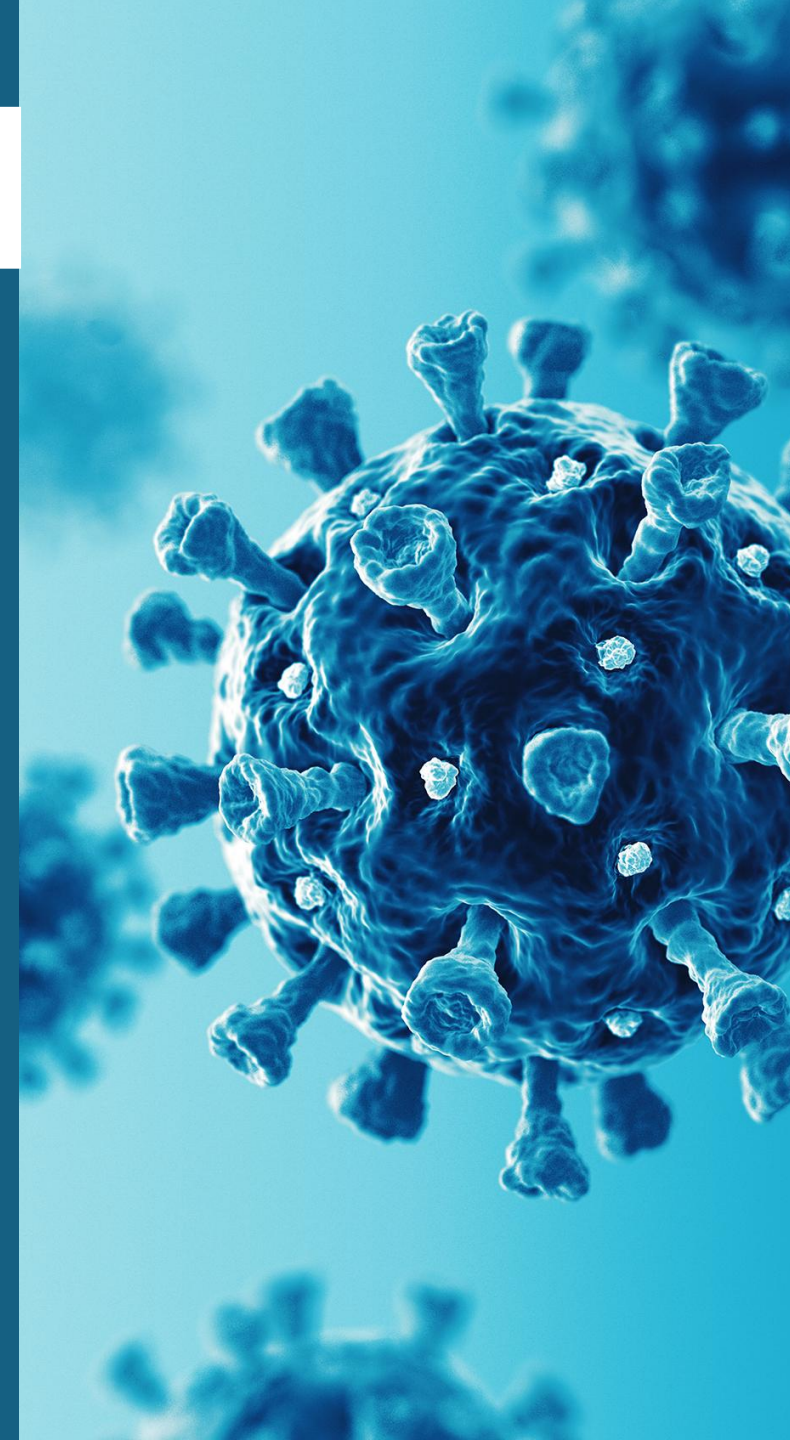
## Introduction

Thank you for downloading this Communications pack.

In it you will find:

- Overview of the film's objectives
- Discussion prompts
- Discussion questions
- Marketing assets
- Social media material
- Survey

We do hope you will find these useful and help to promote the distribution of this film and its important message.





## Film's objectives – Overall

### **Objective of the Film Screening:**

This film screening aims to provide a space for reflection, healing, and acknowledgment of the grief and trauma experienced during the Covid-19 pandemic. Many bereaved individuals and frontline healthcare workers were unable to properly process their loss due to the extreme circumstances, and as society moved forward, their pain often remained unaddressed.

By showcasing a professional observational documentary, the screening offers a structured yet compassionate environment for individuals to recognise and process their emotions. It serves as a valuable resource for healthcare staff, bereaved families, and the wider community, fostering emotional well-being and resilience.

### **Key Outcomes:**

- Supporting NHS and social care staff in managing stress, anxiety, and grief, reducing burnout, and improving morale.
- Assisting bereaved individuals in processing their loss and alleviating unresolved emotions.
- Promoting communal healing by acknowledging and addressing the collective trauma of the pandemic.

This initiative requires only time and engagement rather than significant financial resources, making it a practical and impactful step toward recovery and emotional well-being.

## Film's objectives – NHS & Social Care System staff

**Frontline NHS Staff** – The film acknowledges the immense pressures faced by doctors, nurses, and healthcare workers who provided care under extreme conditions. It highlights their experiences, ethical dilemmas, and the emotional toll of caring for patients in isolation, offering space to process and discuss lessons for the future.

**Social Care Workers** – Care home staff and community caregivers witnessed the devastating impact of COVID-19 on vulnerable individuals. The film explores their challenges, including supporting residents unable to see loved ones, dealing with loss on a massive scale, and coping with their own grief and trauma.





## Discussion Prompts

COVID-19  
VACCINE

Multiple Dose Vial  
Store between 2°C and 8°C  
Do not Freeze

COVID-19  
VACCINE

Multiple Dose Vial  
Store between 2°C and 8°C  
Do not Freeze

COVID-19  
VACCINE

COVID-19  
VACCINE

COVID-19  
VACCINE

COVID-19  
VACCINE

COVID-19  
VACCINE

# Discussion guide

This discussion guide is designed to support audiences in reflecting on the themes presented in *The Impact of Covid on Dying, Death & Bereavement*. The film explores how the pandemic reshaped end-of-life experiences, grief, and the support structures available for the bereaved.

## Key Themes to Consider

### 1. Isolation in Death and Bereavement

1. How did Covid-19 affect traditional grieving rituals and funerals?
2. What impact did restrictions have on families unable to be with loved ones at the end of life?

### 2. The Role of Healthcare and Social Care Professionals

1. How did the pandemic challenge end-of-life care practices?
2. What lessons can be learned to improve future support for dying individuals and their families?

### 3. Grief and Mental Health

1. How did the pandemic change the experience of grief?
2. What are some coping strategies for those who lost loved ones during Covid-19?



## Discussion questions

1. What emotions did the film evoke for you?
2. How did the film challenge or reinforce your understanding of grief and loss?
3. What could have been done differently to support those facing bereavement during Covid-19?
4. How can individuals, communities, and institutions better support those experiencing grief in the future?
5. What role do cultural and religious traditions play in shaping grief experiences, and how were they affected by the pandemic?





## Marketing & Social Media Assets

Includes:

Screening details poster  
Shareable quotes with image of speakers from film  
Trailer of film

[Download here](#)



EXAMPLE-  
SCREENING  
DETAIL  
POSTER



# IS COVID OVER?

OR HAS ITS EFFECT JUST BEGUN?



Join us for an exclusive screening of  
**“The Impact of Covid 19 on Dying,  
Death and Bereavement”**  
followed by a Q&A session

Host:

Peter Blackman

(Chairman, SWF Health & Social Care Group)

**OPEN  
FOR  
PUBLIC**



28 March 2025, 07.00 p.m.



SWF Community Hub



RSVP



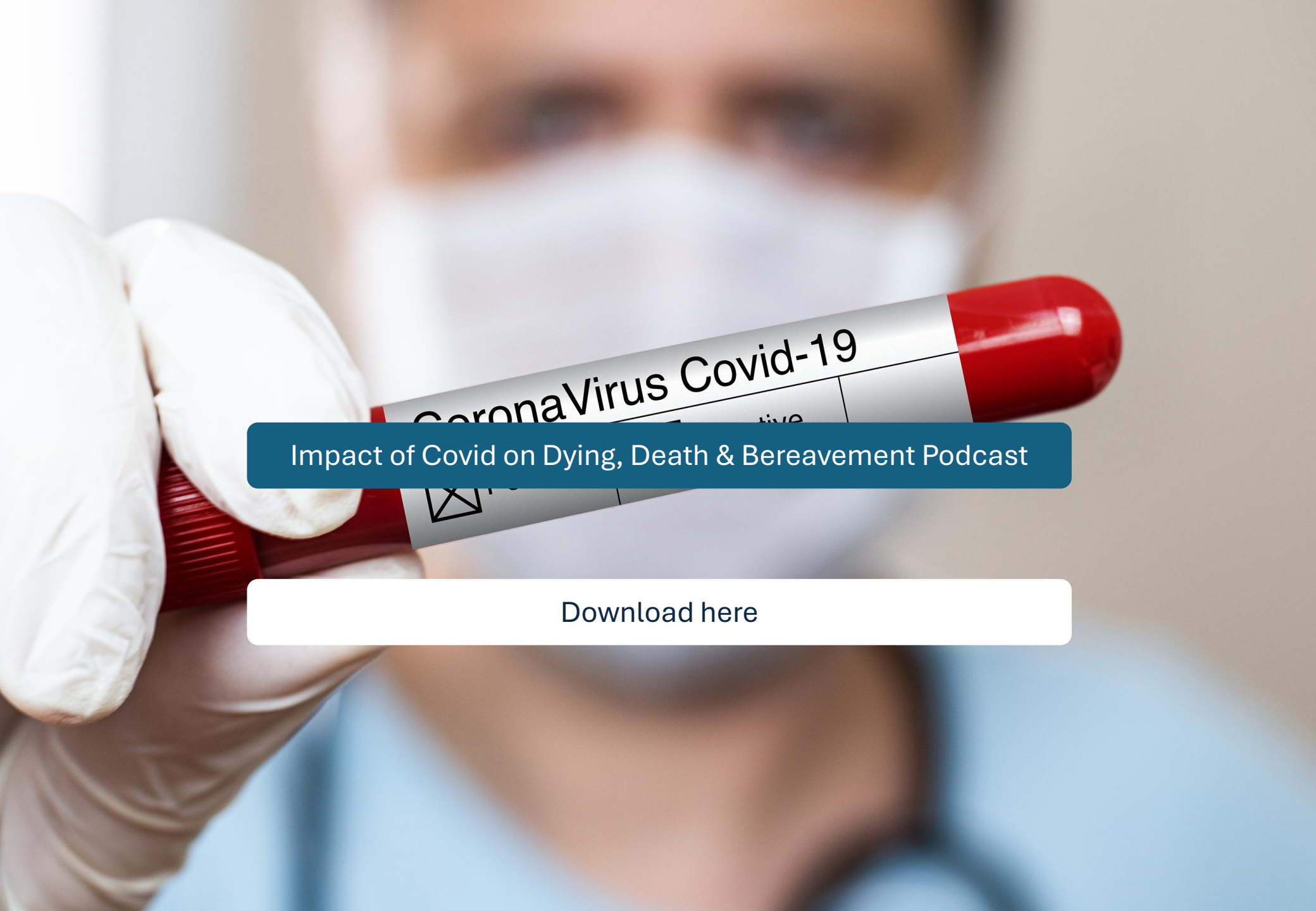
[swfhealthsocial.co.uk](https://swfhealthsocial.co.uk)

A close-up photograph of a healthcare worker wearing a blue surgical cap, a light blue face mask, and blue nitrile gloves. They are holding a clear plastic test tube in their left hand and a cotton swab in their right hand, positioned as if to collect a sample. The background is a plain, light-colored wall.

Impact of Covid on Dying, Death & Bereavement Film

[Download here](#)





Impact of Covid on Dying, Death & Bereavement Podcast

[Download here](#)

## Survey

Once the film has been viewed, we encourage participants to complete an online survey which will help obtain feedback as well as assess the impact the film has had on them.

The survey can be accessed via the link below or by scanning the QR code.

<https://us4.list-manage.com/survey?u=cdc642811c5cd2b74c66dfd9f&id=eedb83b64e&attribution=false>





# The Impact of Covid on Dying, Death & Bereavement

A 37-minute film



South Woodham Ferrers  
Health & Social Care Group



In partnership with:



Funded by  
UK Government



Mid and South Essex  
Integrated Care  
System



Chelmsford  
City Council