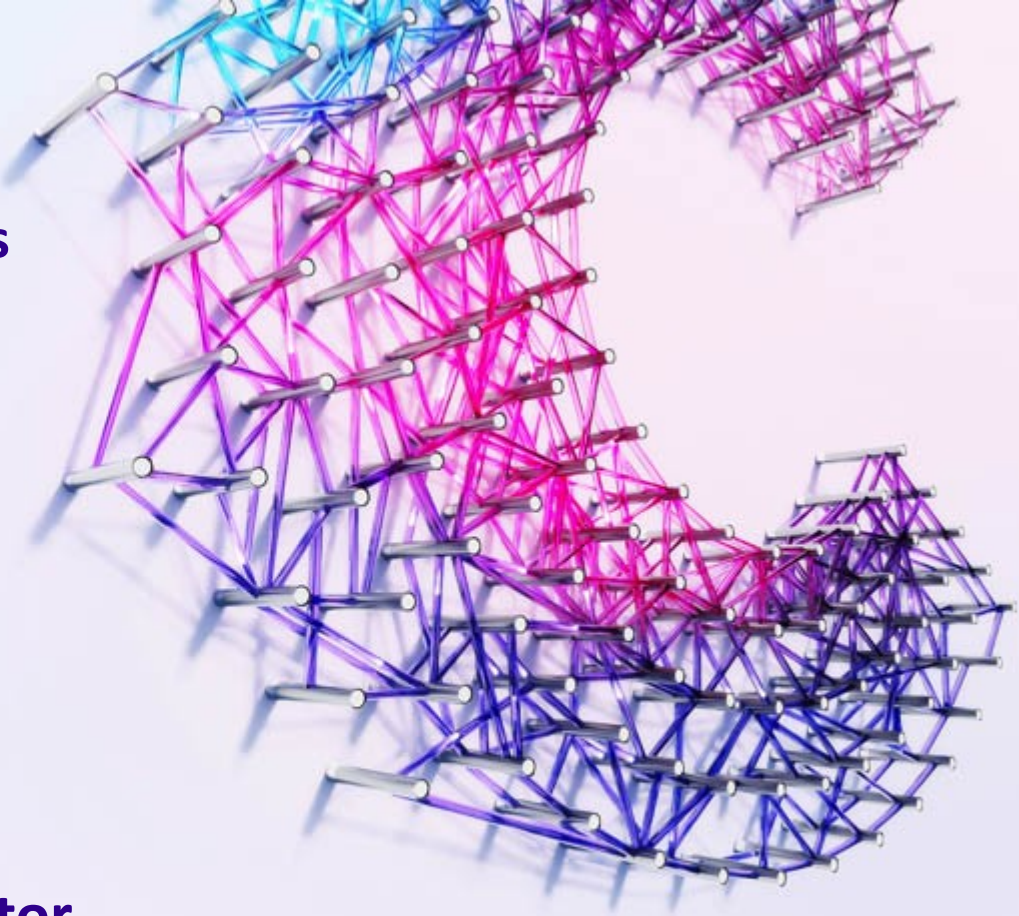


Cancer Screening Programmes

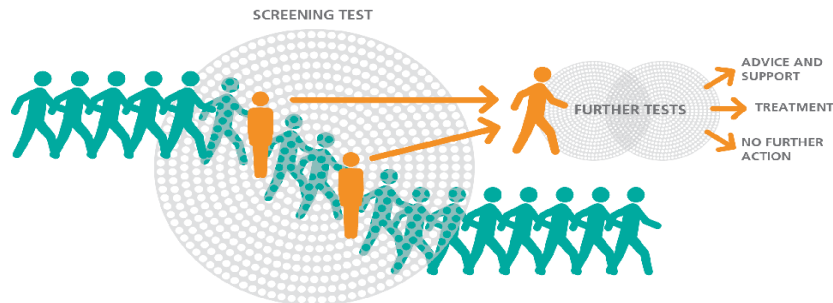
27th September 2017

Sue White

Cancer Research UK Facilitator

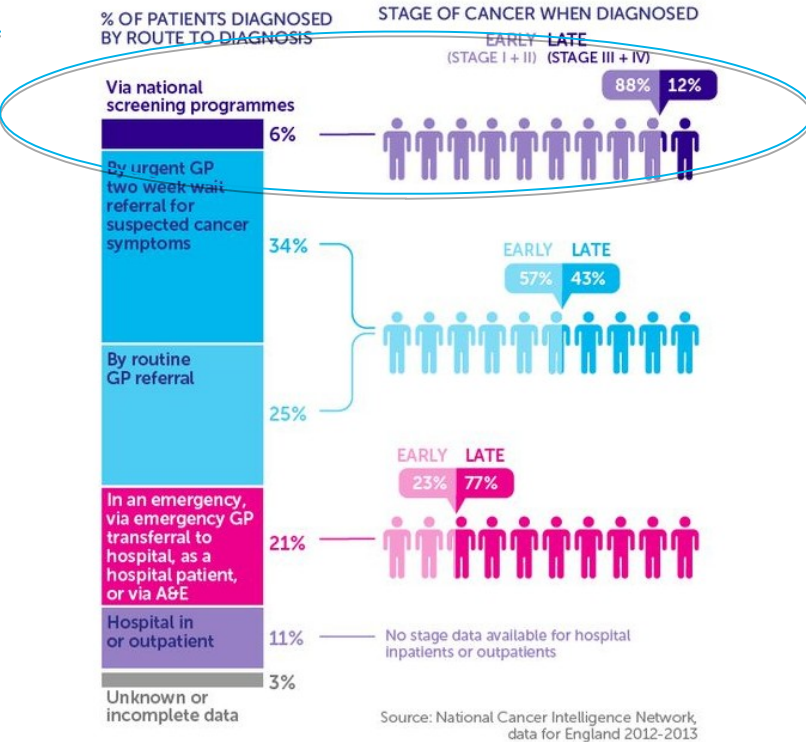


What is Screening?



- It targets a specific population or group of people
- It is like a filter
- Most people are unlikely to have the condition and will pass through the filter (screening test)
- People whose results suggest they are more likely to have it are caught in the filter - they need further tests to determine if they really do have the condition

Why is screening important?



Source: National Cancer Intelligence Network, data for England 2012-2013

Screening reduces mortality

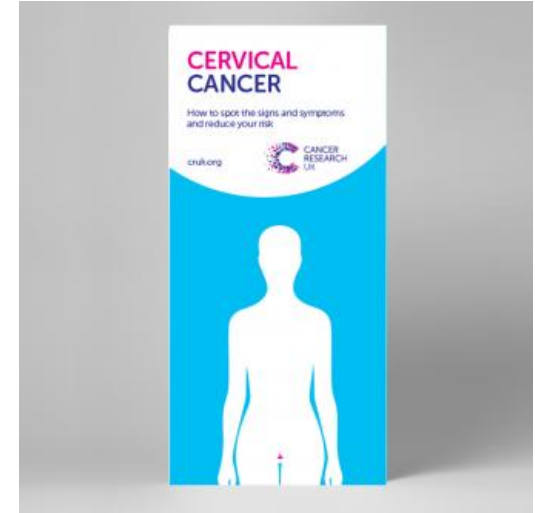
- It can detect cancer at an early stage
 - 88% of cancers detected through screening are at an early stage (stage I and II)

Some programmes can prevent cancer

- Bowel scope screening
- Cervical screening

Cervical screening aims to prevent cancer

- It is **NOT a test to find cancer**. It is a test to detect changes to the cells of the cervix that may develop into cancer in the future
- Women from 25-64, who are **registered with a GP** are eligible for cervical screening.
- Women aged 25-49 are invited every 3 years. After that, women are invited every 5 years until the age of 64

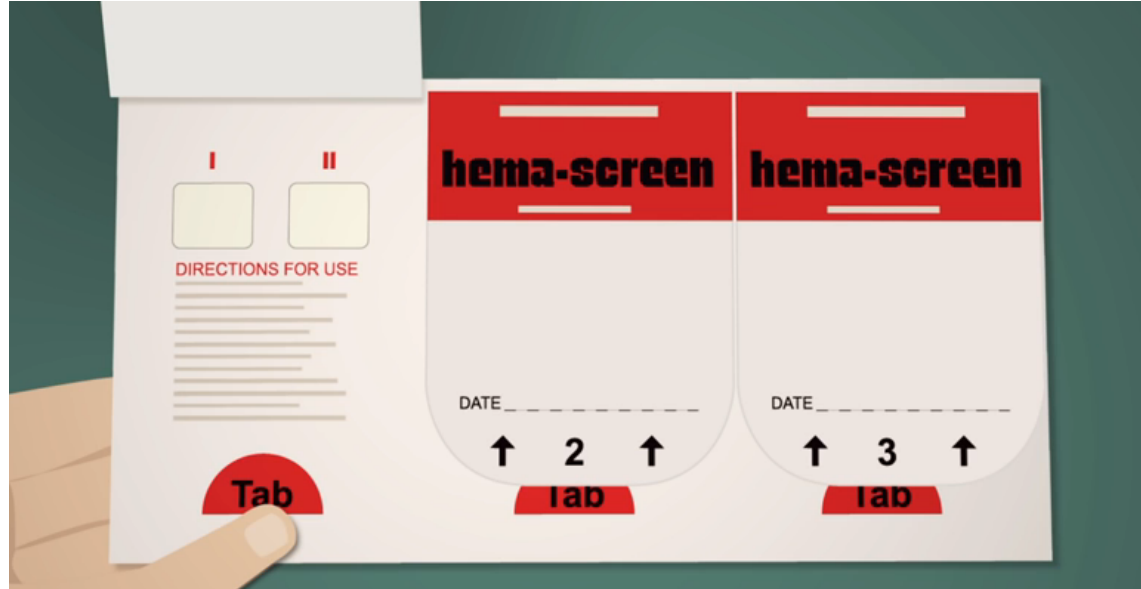
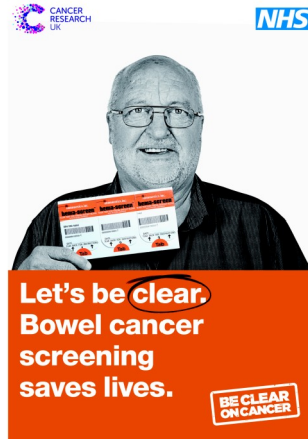
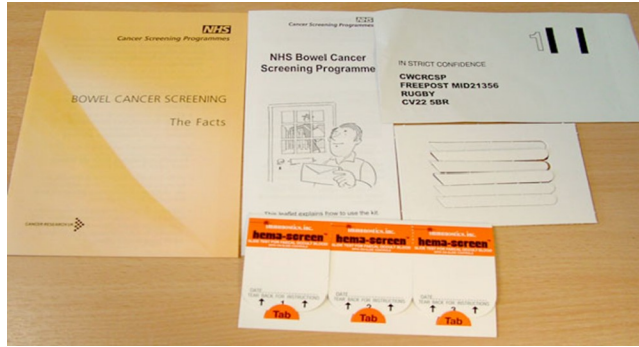


Breast screening: mammography

- For women aged between 50 and 70 years, who are registered with a GP
- Every 3 years
- Test is a mammogram – 2 x-rays of each breast
- Carried out at special clinics or mobile breast screening units
- Self-referral over 70



Bowel Screening



Bowel Cancer Screening

- Men and women aged between 60-74 are invited every 2 years.
 - Must be **registered with a GP practice** to receive invitation
 - **Anyone over 74 can request a kit** by calling 0800 707 6060
- Screening kit **completed at home** and sent to the hub
- The screening hub analyses the kit
 - The test detects tiny amounts of blood in the sample of poo, which can't be seen by the eye
 - The test **does not diagnose bowel cancer**



Thank you!

Sue White
07979915472
sue.white@cancer.org.uk
cruk.org/facilitators

